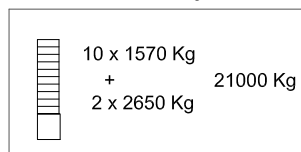


Peso del lastre / Weight ballast

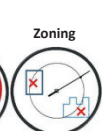


**Kg** Peso de la grúa sin lastre / Dead weight without ballast / Konstruktionsgewicht ohne ballast / Poids de construction sans lest / Peso della gru senza zavorra

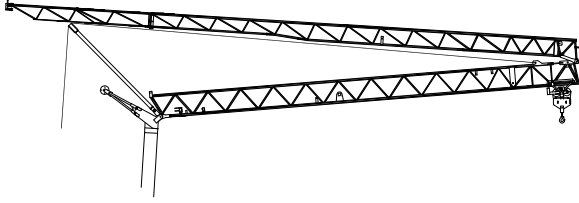
**i** Consultarnos - Consultateci - Consult us - Nous consulter - Auf anfrage - советоватьсь





**DIN/FEM** **CE**  
EN 14439-FEM 1005  
C25 D25 C50 D50

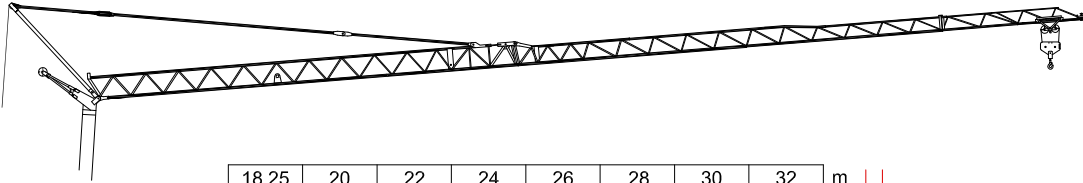



Curvas de cargas - Load diagrams - Lastkurven - Courbes de charges - Curve di carico - График грузоподъёмности





14,6	m	
2000	Kg	


13,7	14,1	14,6	m	
4000	3866	3700	Kg	





18,25	20	22	24	26	28	30	32	m	
2000	1788	1590	1428	1293	1180	1083	1000	Kg	

10,5	12	14	16	18	18,25	20	22	24	26	28	30	32	m	
4000	3357	2743	2309	1987	1950	1738	1540	1378	1243	1130	1033	950	Kg	

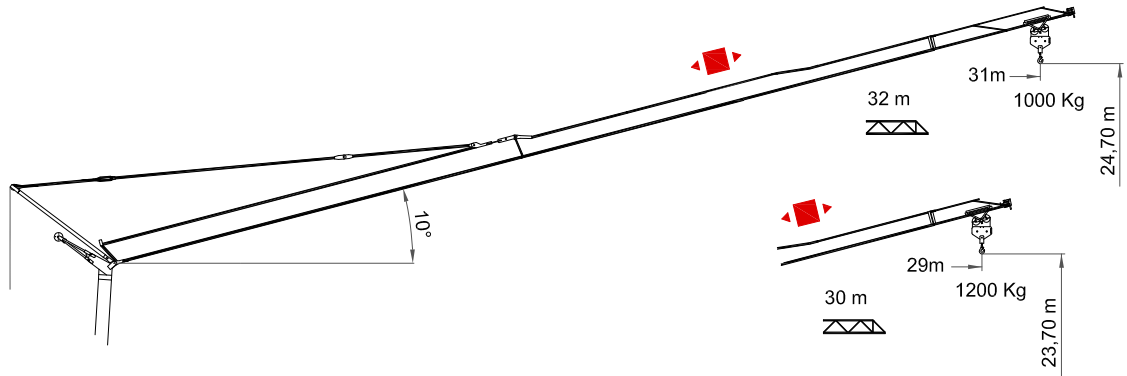
19,75	20	22	24	26	28	30	m	
2000	1970	1753	1576	1430	1305	1200	Kg	



11,3	12	14	16	18	19,75	20	22	24	26	28	30	m	
4000	3691	3019	2545	2192	1950	1920	1703	1526	1380	1255	1150	Kg	



20,65	22,7	24,7	26,7	27,7	m	
2000	1783	1609	1464	1400	Kg	

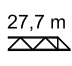

11,75	12,7	14,7	16,7	18,7	20,65	22,7	24,7	26,7	27,7	m	
4000	3615	2994	2546	2208	1950	1733	1559	1414	1350	Kg	

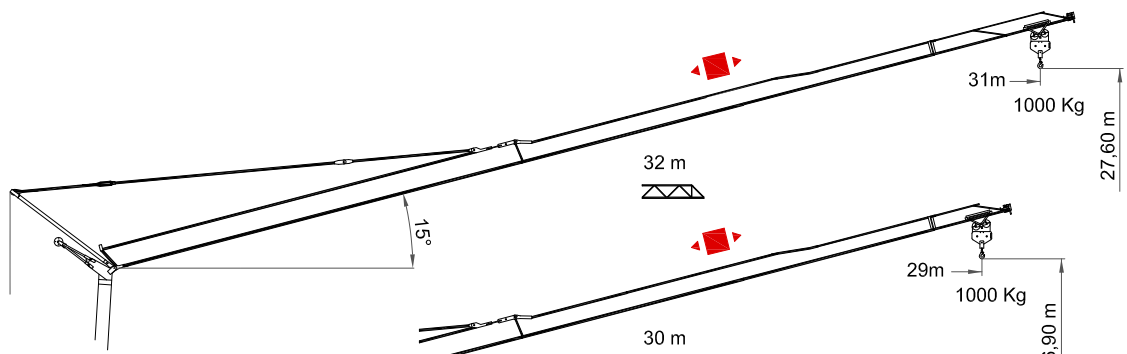
Flecha izada - Luffing jib - Ausleger in steilstellung - Flèche relevée - Braccio impennato



 32 m	18,25	20	22	24	26	28	30	32	m	
	2000	1788	1590	1428	1293	1180	1083	1000	Kg	

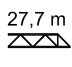
 30 m	19,75	20	22	24	26	28	30	m	
	2000	1970	1753	1576	1430	1305	1200	Kg	

 27,7 m	20,65	22,7	24,7	26,7	27,7	m	
	2000	1783	1609	1464	1400	Kg	









 32 m	0	31	m
		1000	Kg



 30 m	0	29	m
		1000	Kg

 27,7 m	0	26,80	m
		1000	Kg



## Mecanismos - Mechanisms - Antriebe - Mécanismes - Meccanismi - Приводы

10Hp / 14,75Hp  
(7,5Kw / 11Kw)  
HBG 22,5m Ø10mm



							
	m/min	5	20,5	40	2,5	10,25	20
	Kg	2000	2000	1000	4000	4000	2000
	Kw	7,5					
	m/min	5	32	52	2,5	16	26
	Kg	2000	2000	1000	4000	4000	2000
		Kw 11					
	m/min	19		45	19		45
	Kg	2000		2000	4000		2000
	Kw	2,2					
	r.p.m	0,25	0,5	0,8	0,25	0,5	0,8
	N.m.	30					
	Kw	4					

-  Elevación / Hoisting / Heben / Levage / Sollevamento
-  Distribución / Trolleying / Katzfahren / Distribution / Distributions
-  Orientación / Slewing / Schwenken / Orientation / Rotazione
-  Montaje / Erection / Montage / Montage / Montaggio

### 10Hp (7,5Kw) - INV



 2000/14/CEE 2005/88/CEE	 2006/95 /CEE	400V(± 10) 50Hz I <sub>max.</sub> = 24A Fuse= 25A 480V (±10) 60Hz I <sub>max.</sub> = 21A Fuse= 24A	TOTAL POWER 15 KVA	GENERATOR 25 KVA	100m 4x6mm <sup>2</sup>	150m 4x10mm <sup>2</sup>	200m 4x10mm <sup>2</sup>
---	--	--	--------------------------	---------------------	----------------------------	-----------------------------	-----------------------------

### 14,75Hp (11Kw) - INV

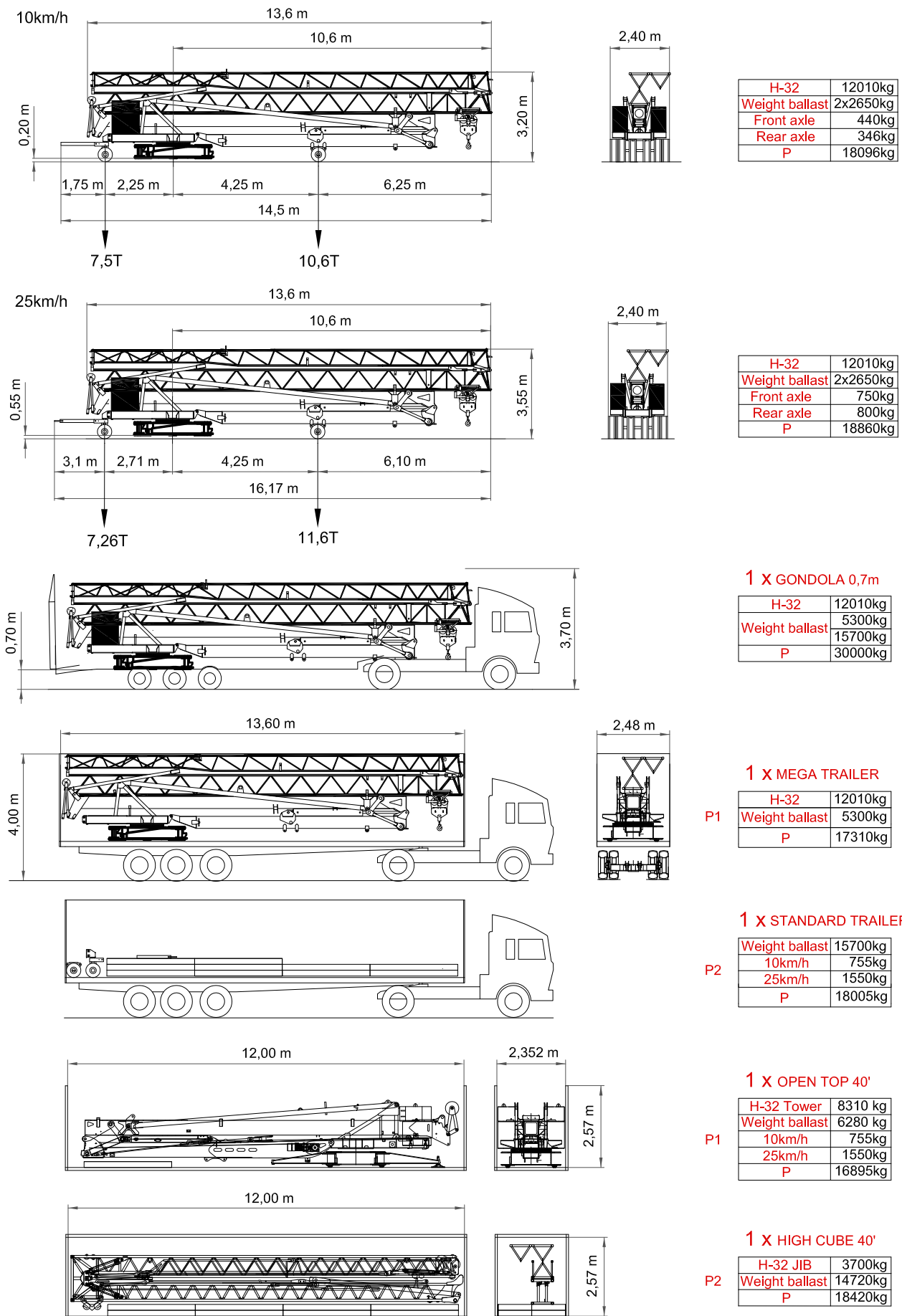
 2000/14/CEE 2005/88/CEE	 2006/95 /CEE	400V(± 10) 50Hz I <sub>max.</sub> = 26A Fuse= 27A 480V (±10) 60Hz I <sub>max.</sub> = 24A Fuse= 25A	TOTAL POWER 16 KVA	GENERATOR 25 KVA	100m 4x6mm <sup>2</sup>	150m 4x10mm <sup>2</sup>	200m 4x10mm <sup>2</sup>
---	--	--	--------------------------	---------------------	----------------------------	-----------------------------	-----------------------------

### OPTIONAL (7,5Kw)

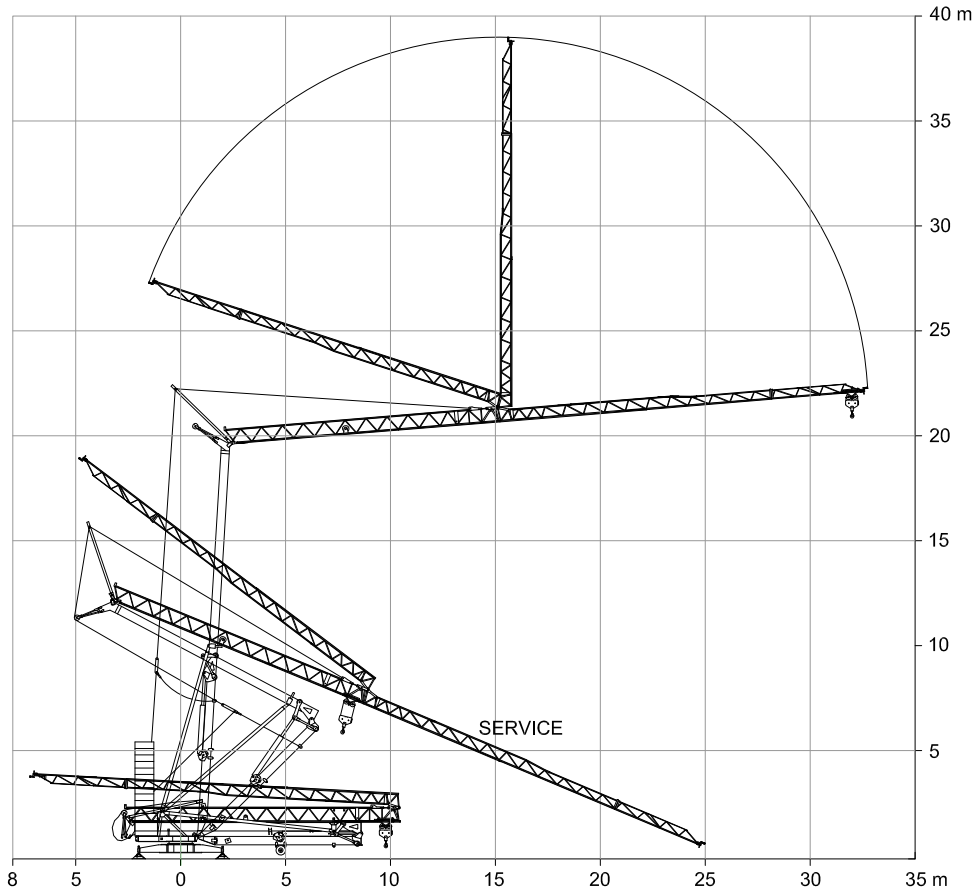
#### 4Hp (3,5Kw) - INV

 2000/14/CEE 2005/88/CEE	 2006/95 /CEE	230V(± 10) 50Hz I <sub>max.</sub> = 16A Fuse= 20A	TOTAL POWER 20KVA	GENERATOR 25 KVA	100m 4x6mm <sup>2</sup>	150m 4x10mm <sup>2</sup>	200m 4x10mm <sup>2</sup>
---	--	---	-------------------------	---------------------	----------------------------	-----------------------------	-----------------------------

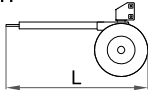
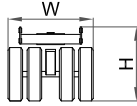
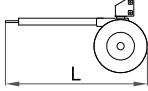
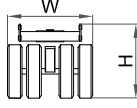
**Dimensiones y transporte - dimensions and transport - Abmessungen und Transport- dimensions et des transporte - dimensioni e trasporti - Размеры и транспорта**



Montaje - Erection - Montage - Montage - Montaggio



Máx. 50 Km/h

		L (m)	W (m)	H (m)	Kg		
<b>Eje de transporte delantero</b> Road transport axle front / Transportachse vorne Essieux de transport avant / Asse di trasporto anteriore	10km/h			2,05	1,24	1,07	440
	<b>Eje de transporte trasero</b> / Road transport axlebehind / Transportachse hinten / Essieux de transport arrière / Asse di trasporto posteriore						
<b>Eje de transporte delantero</b> Road transport axle front / Transportachse vorne Essieux de transport avant / Asse di trasporto anteriore	25km/h			2,05	1,24	1,07	750
	<b>Eje de transporte trasero con freno</b> Transportachse hinten mit bremsen Essieux de transport arrière avec frein Asse di trasporto posteriore con freno						