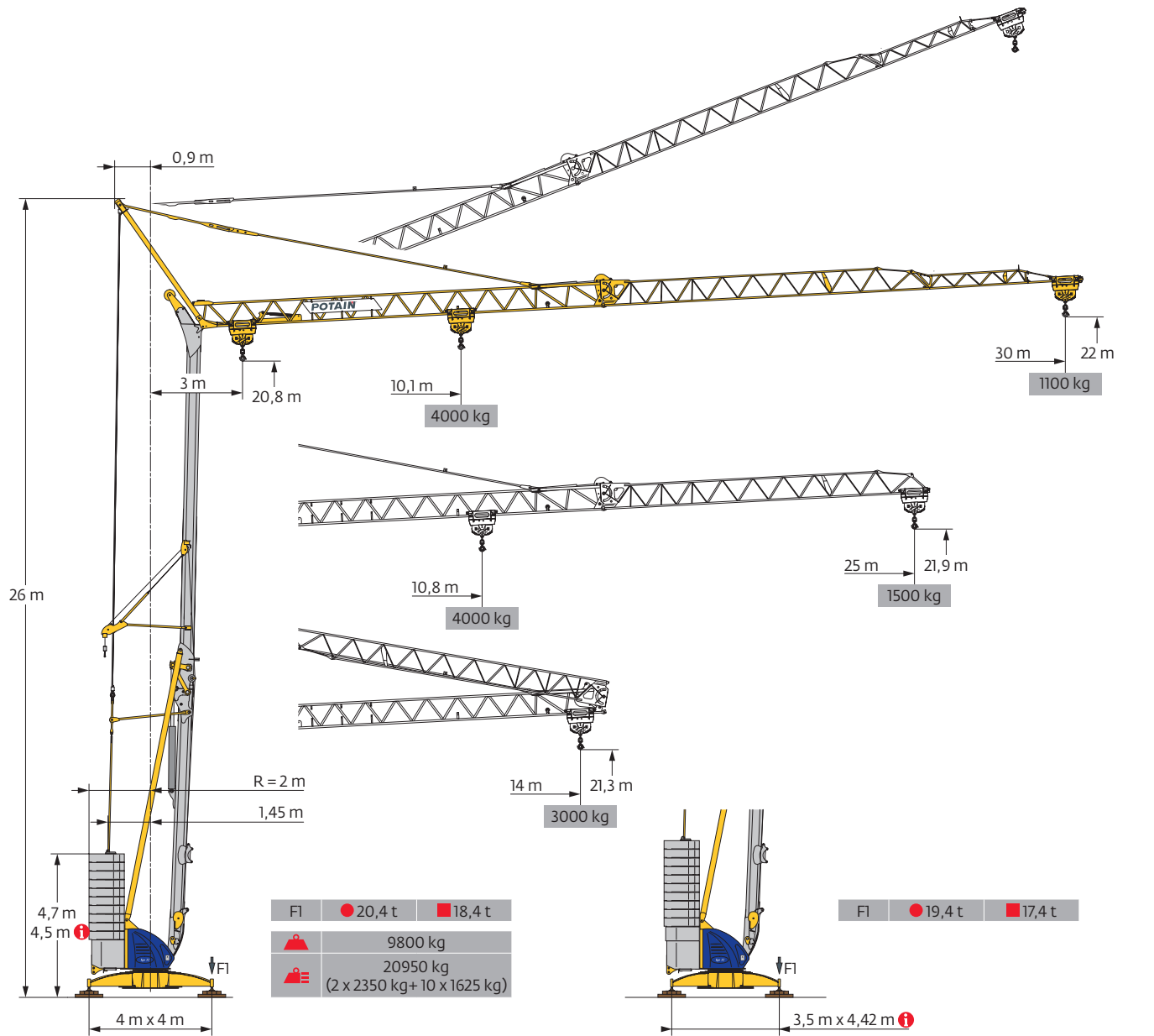
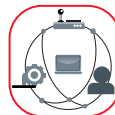


Igo 32



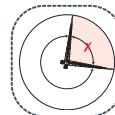
SmartCom



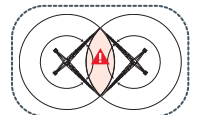
CraneSTAR
Diag



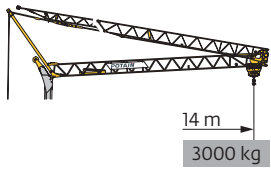
Top Zone



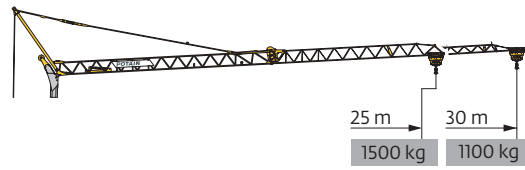
Anti-collision
system



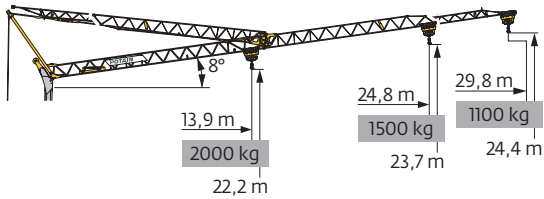
Courbes de charges / Lastkurven / Load curves / Curvas de cargas / Curve di carico
 Curvas de carga / Кривые нагрузок



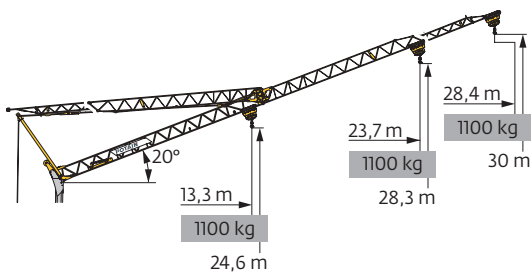
| | | | | | | | |
|------|---|---|------|------|------|------|----|
| 30 m | 3 | ▶ | 11,1 | 12 | 13 | 14 | m |
| ▲▲▲ | | | 4000 | 3645 | 3295 | 3000 | kg |
| ■ | | | | | | 2000 | kg |
| | | | | | | 2000 | kg |
| 25 m | 3 | ▶ | 11,1 | 12 | 13 | 14 | m |
| ▲▲▲ | | | 4000 | 3645 | 3295 | 3000 | kg |
| | | | | | | 2000 | kg |
| | | | | | | 2000 | kg |



| | | | | | | | | | | | | | | | | | |
|------|------|------|------|------|------|------|------|------|------|------|------|------|------|------|------|------|----|
| 10,1 | 11 | 12 | 13 | 14 | 15 | 16 | 17,4 | 18,3 | 19 | 21 | 23 | 25 | 26 | 28 | 30 | m | |
| 4000 | 3600 | 3215 | 2900 | 2640 | 2420 | 2230 | 2000 | 1885 | 1795 | 1585 | 1410 | 1265 | 1205 | 1095 | 1000 | kg | |
| | | | | | | | | 2000 | 1885 | 1795 | 1585 | 1410 | 1265 | 1205 | 1095 | 1000 | kg |
| | | | | | | | | | 2000 | 1915 | 1700 | 1520 | 1375 | 1310 | 1200 | 1100 | kg |
| 10,8 | 11 | 12 | 13 | 14 | 15 | 16 | 17 | 18,8 | 19,7 | 21 | 23 | 25 | | | | m | |
| 4000 | 3935 | 3520 | 3180 | 2895 | 2655 | 2450 | 2270 | 2000 | 1890 | 1745 | 1555 | 1400 | | | | kg | |
| | | | | | | | | | 2000 | 1890 | 1745 | 1555 | 1400 | | | kg | |
| | | | | | | | | | | 2000 | 1850 | 1660 | 1500 | | | kg | |



| | | | | | | | | | | | | |
|------|---|---|------|------|------|------|------|------|------|------|------|----|
| 30 m | 3 | ▶ | 17,2 | 18,2 | 19 | 21 | 23 | 25 | 26 | 28 | 29,8 | m |
| ▲▲▲ | | | 2000 | 1870 | 1770 | 1565 | 1395 | 1255 | 1190 | 1085 | 1000 | kg |
| | | | | | | | | | | | 1100 | kg |
| | | | | | | | | | | | | kg |
| 25 m | 3 | ▶ | 18,6 | 19 | 19,5 | 21 | 23 | 24,8 | | | | m |
| ▲▲▲ | | | 2000 | 1950 | 1890 | 1725 | 1540 | 1400 | | | | kg |
| | | | | | | | | | | | | kg |
| | | | | | | | | | | | | kg |



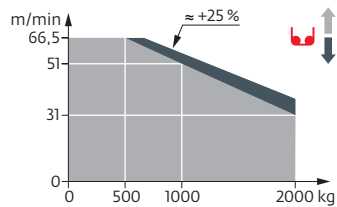
| | | | | | | | | | | | | |
|------|---|---|--|--|--|--|--|--|--|------|------|----|
| 30 m | 3 | ▶ | | | | | | | | | 28,4 | m |
| ▲▲▲ | | | | | | | | | | | 1000 | kg |
| | | | | | | | | | | | 1100 | kg |
| 25 m | 3 | ▶ | | | | | | | | 23,7 | m | |
| ▲▲▲ | | | | | | | | | | 1000 | kg | |
| | | | | | | | | | | 1100 | kg | |

Mécanismes / Triebwerke / Mechanisms / Mecanismos / Meccanismi
 Mecanismos / Механизмы

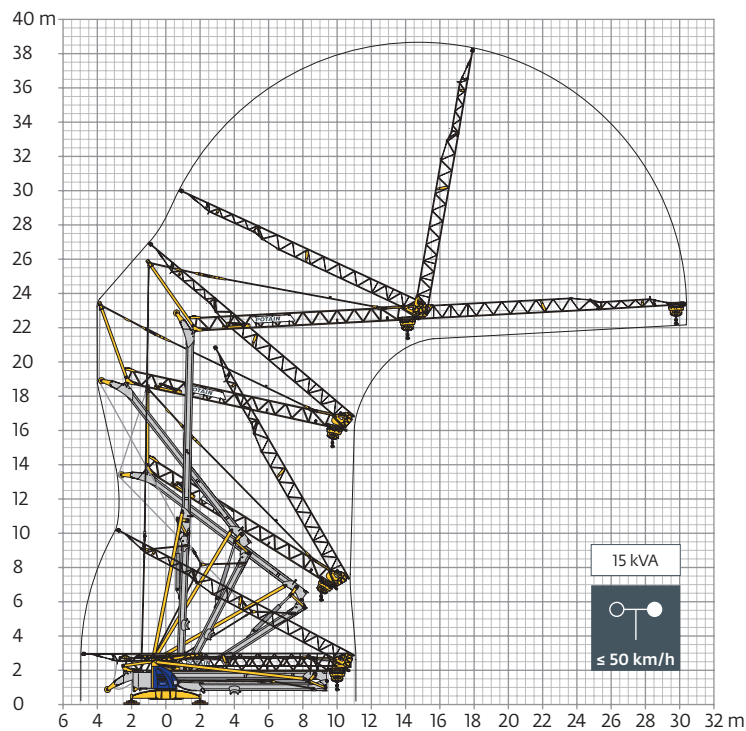
| 400 V - 50 Hz 480 V - 60 Hz | | | | | | | | | | | | ch - PS hp | kW | |
|--------------------------------|-----------------------------|------------------------|--------------|------|------|------|------|------|------|------|------|---------------|-----|----|
| | 15 LVF 10 Optima | m/min | 3,6 | 18 | 31 | 51 | 66,5 | 1,8 | 9 | 15,5 | 25,5 | 33 | 15 | 11 |
| | | kg | 2000 | 2000 | 2000 | 1000 | 500 | 4000 | 4000 | 4000 | 2000 | 1000 | | |
| | 3 DVF 5 | m/min | 15 - 30 - 41 | | | | | | | | | 3 | 2,2 | |
| | RVF 31 Optima+ | tr/min U/min rpm | 0 → 0,8 | | | | | | | | | 2 | 1,5 | |

| IEC 60204-32 | kVA |
|--|--------|
| 400 V (+10% -10%) 50 Hz / 480 V (+6% -10%) 60 Hz | 14 kVA |

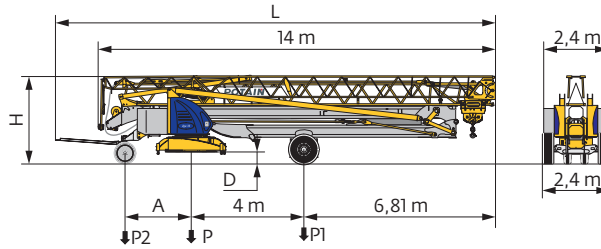
15 LVF 10 Optima



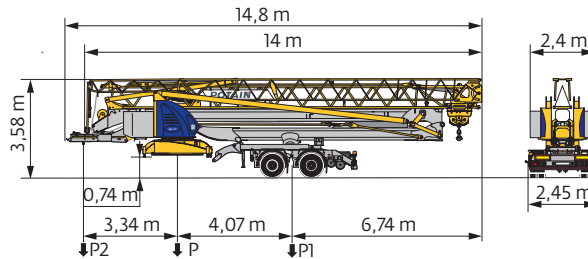
Montage / Montage / Erection / Montaje / Montaggio
 Montagem / Монтаж



Transport / Transport / Transport / Transporte / Trasporto
Transporte / Транспортировка



| | km/h | A (m) | D (m) | H (m) | L (m) | P (kg) | P1 (kg) | P2 (kg) |
|--------------|------|-------|-----------|-----------|-------|--------|---------|---------|
| DS62/S120 | 10 | 2,35 | 0,36/0,21 | 3,2/3,05 | 15,48 | 15405 | 9480 | 5925 |
| DJ100/S125 | 25 | 2,45 | 0,38/0,23 | 3,22/3,07 | 15,77 | 15250 | 9162 | 6088 |
| /..... | | | | | | | | |



| | km/h | P (kg) | P1 (kg) | P2 (kg) |
|--|------|--------|---------|---------|
| SL122/J215M (EBS) RCE e2*2007/46*0493*01 WVTA e2*2007/46*0493*01 /..... | 80 | 17740 | 12430 | 5310 |

| | FR | DE | EN | ES | IT | PT | RU |
|---|---|---|---|--|---|--|--|
| R | Rayon de giration | Schwenk radius | Rear slewing radius | Radio de giro | Raggio di rotazione | Raio de rotação | Задний габарит |
| i | Nous consulter | Auf Anfrage | Consult us | Consultarnos | Consultateci | Consultar-nos | Проконсультируйтесь у нас |
| ● | Réactions en service | Reaktionskräfte in Betrieb | Reactions in service | Reacciones en servicio | Reazioni in servizio | Reacções em serviço | Реакция при работе |
| ■ | Réactions hors service | Reaktionskräfte außer Betrieb | Reactions out of service | Reacciones fuera de servicio | Reazioni fuori servizio | Reacções fora de serviço | Реакция в покое |
| ⚖ | Poids à vide, sans lest, sans trains de transport, avec flèche maxi. et hauteur standard. | Gewicht ohne Last, ohne Ballast, ohne Transportachsen, mit max. Auslager und Standardhöhe | Weight without load, without ballast, without transport axes, with max. jib and standard height | Peso en vacío, sin lastre, sin trenes de transporte con flecha y altura estandar | Peso a vuoto, senza zavorra, senza assali di trasporto, con braccio max e altezza standard. | Peso em vazio, sem lastro, sem eixos de transporte com lança máxima e altura standard. | Вес без груза, без балласта, без осей для транспортировки, с максимальным вылетом стрелы и стандартной высотой |
| ⚖ | Poids total du lest | Ballast-Gesamtgewicht | Total ballast weight | Peso total del lastre | Peso totale della zavorra | Peso total do lastro | Общий вес балласта |
| □ | Équipements standards | Standardausrüstungen | Standard equipment | Equipamiento de serie | Equipaggiamento standard | Equipamento de série | Стандартное оборудование |
| ⊖ | Équipements optionnels | Sonderausrüstungen | Options | Equipamiento opcional | Equipaggiamento in opzione | Equipamento opcional | Дополнительное оборудование (опция) |
| ⬆ | Levage | Heben | Hoisting | Elevación | Sollevamento | Elevação | Подъем |
| ⬆ | Distribution | Katzfahren | Trolleying | Distribución | Distribuzione | Distribuição | Перемещение по стреле |
| ⬆ | Orientation | Schwenken | Slewing | Orientación | Rotazione | Rotação | Поворот |
| ⚡ | Puissance requise | Erforderliche Leistung | Required power | Potencia Necesaria | Potenza richiesta | Potência Necessária | Потребляемая мощность |

| | | | | | | | |
|---|--|--|---|--|--|---|--|
| ⚠ | Hauteurs sous crochet données moufle plaquée | Hakenhöhen werden mit plattiertem Haken angegeben | Hook heights given with plated pulley block | Altura bajo gancho con pasteca bloqueada | Altezza sotto gancio con bozzello in contatto con carrello | Altura ao gancho com o cadernal em contacto com o carrinho | высота под крюком дана при условии, что крюковая подвеска соприкасается с кареткой |
| | Document commercial non contractuel | Unverbindliches Vertriebsdokument | This commercial document is not legally binding | Documento comercial no contractual | Documento commerciale non vincolante | Documento comercial não contratual | Этот коммерческий документ не является юридически обязательным |
| | Pour toute information technique se référer à la notice correspondante | Für technische Informationen, siehe die entsprechenden Anweisungen | For any technical information, please refer to the corresponding instructions | Para cualquier información técnica, ver la noticia correspondiente | Per tutte le informazioni tecniche fare riferimento al catalogo istruzioni | Para qualquer informação técnica complementar consultar as respectivas instruções | Для получения технической информации, см. соответствующие инструкции |

